

*Time : 60 minutes*

*No dictionaries may be used*

The test consists of two questions. You should spend about 30 minutes on each question , as they carry 50 % of the total marks each

ANSWER BOTH OF THESE TWO QUESTIONS BY WRITING YOUR ANSWERS ON THE ANSWER SHEET IN THE LINED SPACES PROVIDED

### Question 1 :

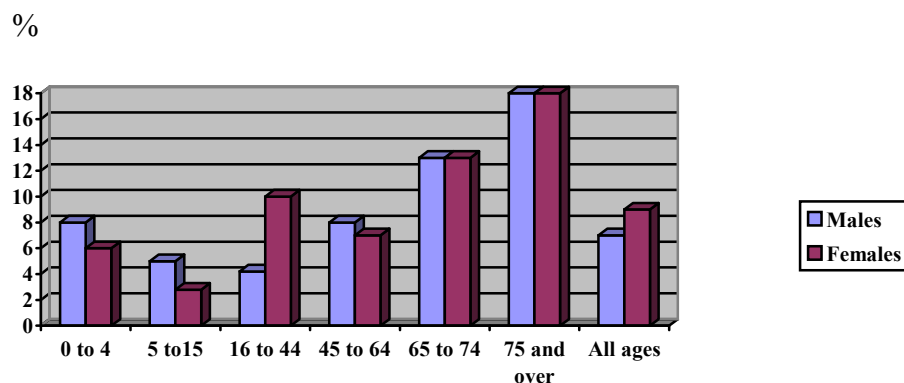
*You should spend about 30 minutes on this task*

Using Chart A below , write a report about hospital stays in Britain. You should

- compare the figures for the different age groups and sexes  
(Do not go into too much numerical detail)
- suggest possible reasons for these differences

**Write about 200 words**

**Chart A : Percentage of males and females who were admitted to hospital for at least one night during the last year (Great Britain , 2000)**



### Question 2

*You should spend about 30 minutes on this task*

Some people say that "Health" is a difficult word to define. Discuss:

- what you think it means to be a healthy person
- what are the main health problems in your country
- how you personally try to keep yourself healthy.

**Write about 200 words**